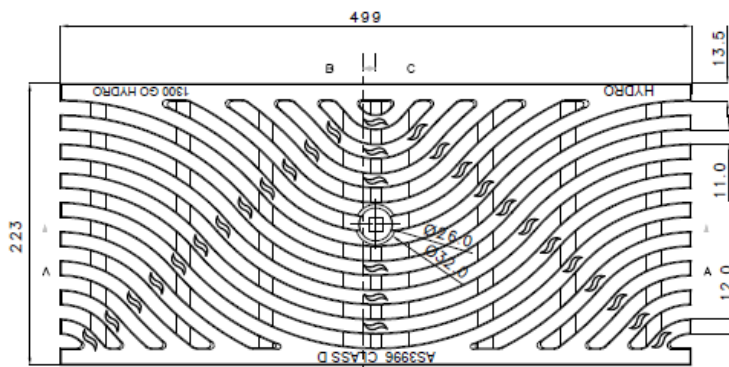


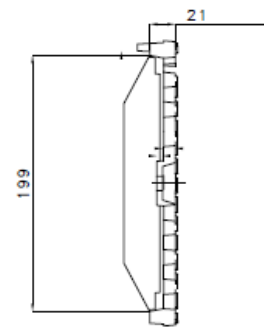
HYDRO DUCTILE IRON WAVE GRATE

Technical Drawing

Plan View

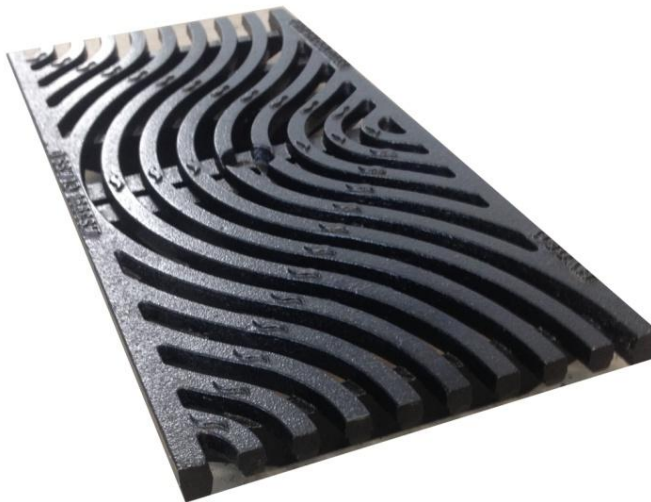


Side elevation



Grate Features

1. Ideal for Streetscape and Landscape applications.
2. Manufactured from Ductile Iron including KTL Coating.
3. Heelguard Design.
4. Certified to AS3996 Load Class D.
5. Includes anti-shunt lugs which prevents longitudinal movement.

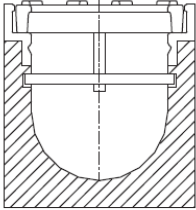


KTL Coating

KTL Coating is a finished technological process used for coating of metal surfaces with a thin, solid, one layer, and corrosion-resistant paint coating.

HYDRO DUCTILE IRON WAVE GRATE

Further Details



STANDARD

Locking Mechanisms

Made from grade #304 Stainless steel Hydro locking mechanisms are safe and easy to install. Simply locate the locking bar recess on the inside of the channel, insert locking bar, place grate on top of channel and thread bolt through the top. Hydro Part Number 161000

About Hydro Construction Products

Hydro Construction Products are the suppliers of high quality Point Drain and Lineal surface water drainage products, cable ducting, pits and covers for the communication and electrical markets, Diamond Tools and equipment.

Visit our website below or call Toll Free 1300 GO HYDRO (AU) or 0800 493 766 (NZ).

Description	Hydro Part #	Length	Width	Height
Ductile Iron Wave Grate (Load Class D)	152584	500	223	21
Standard Locking Mechanism	161000	N/A	N/A	N/A

All above measurements in millimetres.

The Hydro Ductile Iron Wave Grate (152584) is compatible with the following MEA Channel Systems- LC2000, C2000.