



BURNETT HEADS STREETScape

PROJECT:

As a concept in the planning for more than 5 years, the recently completed Burnett Heads Town Centre streetscape project has revitalised the Bundaberg region. The \$8.3 million redesign delivered improved infrastructure, including wider footpaths, landscaping, on-street parking, new smart technology and upgraded sewerage infrastructure.

SOLUTION:

The brief of the project detailed the need for highly functional and economical drainage solutions suitable for local use, while still delivering the coastal aesthetic most enjoyed by this seaside community. The Hydro team delivered outstanding results with strong and versatile polymer concrete drainage channels, combined with practical and discrete ductile iron and stainless steel grating.

With Hydro Supreme polymer concrete drainage channels, integrating high-quality drainage performance, reliability, and aesthetics is achievable. Available in two designs, Hydro's unique polymer concrete trench drainage solutions can be integrated with a galvanised steel edge or stainless steel edge rail. Manufactured from natural mineral products including quartz, basalt and granite, these polymer concrete channels are built to last in terms of function and benefits for the public and environment. For more information contact the team on 1300 GO HYDRO or visit www.hydrocp.com.au.



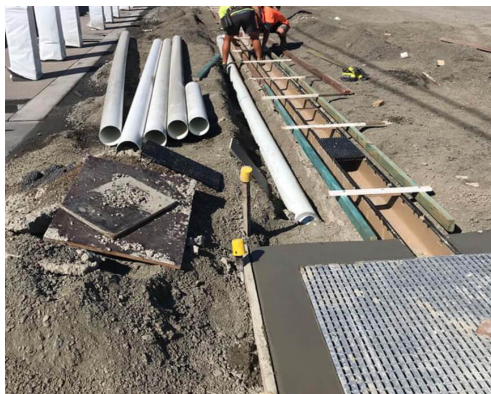
**C2000 CAST IRON EDGE
POLYMER CONCRETE CHANNEL**

- AVAILABLE IN LOAD CLASSES UP TO CLASS G
- DURABLE, STRONG, CORROSION & CHEMICAL RESISTANT
- INSTALLATION DEVICES AVAILABLE



**223M DUCTILE IRON LONGITUDINAL
HEELGUARD GRATE**

- WHEEL & BIKE SAFE
- KTL COATED FOR SUPERIOR CORROSION RESISTANCE



TOLL FREE: 1300 GO HYDRO | hydrocp.com.au

[DRAIN](#) • [STAINLESS](#) • [DIAMOND TOOLS](#) • [GRATES & FRAMES](#) • [CABLEPIT](#) • [COVERS](#)